

IAM SERIES

H55 MODELS

INDEX

88	TECHNICAL DATA
89	DIMENSIONAL DRAWINGS
91	POWER CHARTS
92	ORDERING INSTRUCTIONS

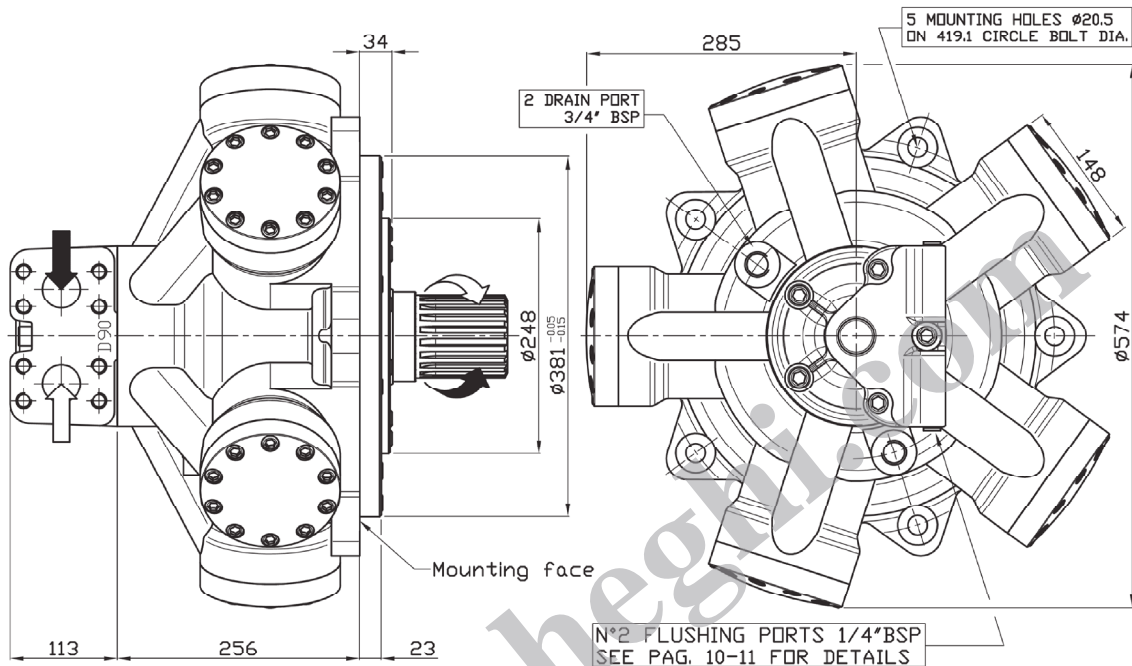
IAM H55 - TECHNICAL DATA

MODEL	N° of pistons	Displacement	Specific Torque	Pressure			Speed		Max Case Pressure	Max Power	Dry Weight	Inertia moment of rotating parts		
				Max Cont.	Max Int.	Peak	Max Continuous	Peak						
		cc/rev	Nm/bar	bar	bar	bar	rpm	rpm	bar	hp	kW	kg	kg cm ²	
IAM H55	2200	5	2126	33,8	250	300	350	240	280	6	228	170	173	837
	2500	5	2525	40,2	250	300	350	240	280	6	228	170	173	837
	2800	5	2807	44,7	250	300	350	240	280	6	228	170	173	837
	3000	5	3028	48,2	250	300	350	230	270	6	228	170	173	837

www.Laheghi.com

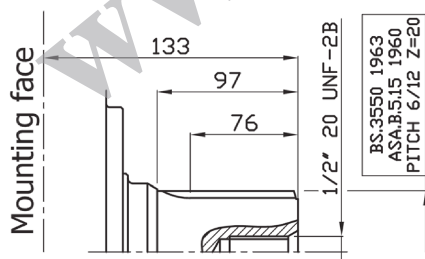
IAM H55 - DIMENSIONAL DRAWINGS

IAM 2200 – 2500 – 2800 H55

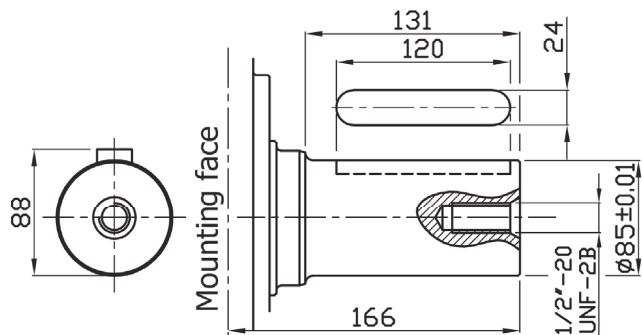


SHAFT OPTIONS

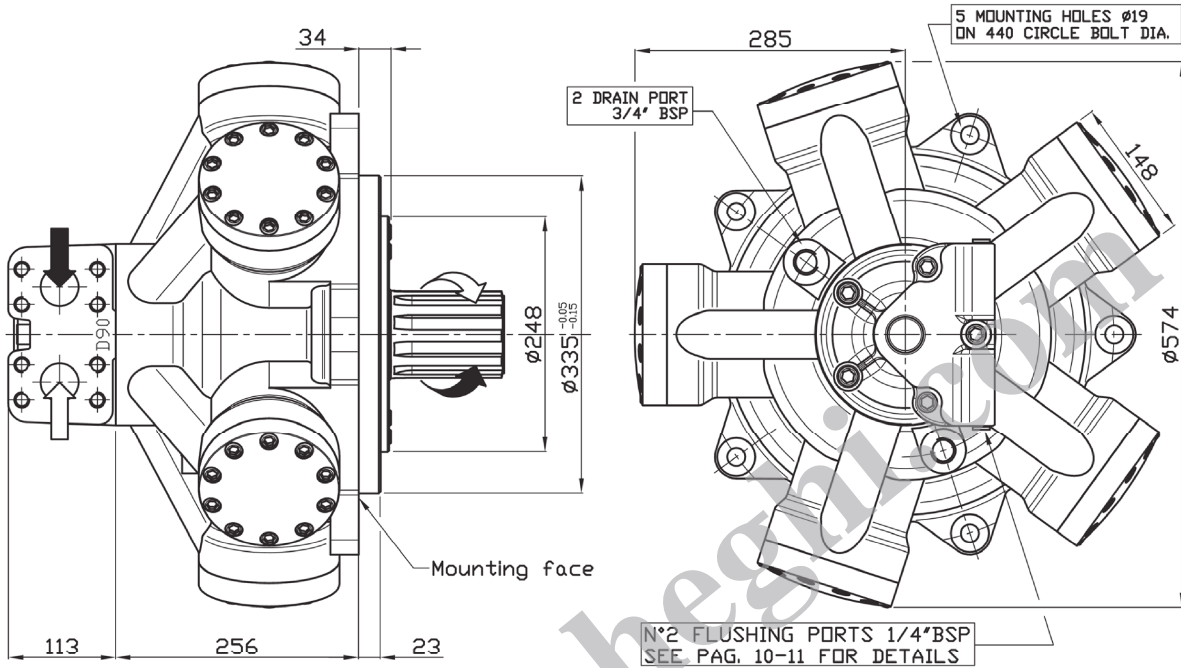
A1: Standard splined shaft



A2: Parallel shaft on request

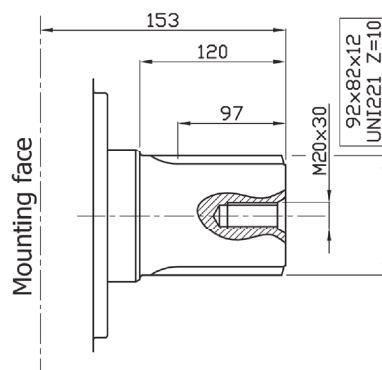


IAM 2500/C – 2800/C – 3000/C H55

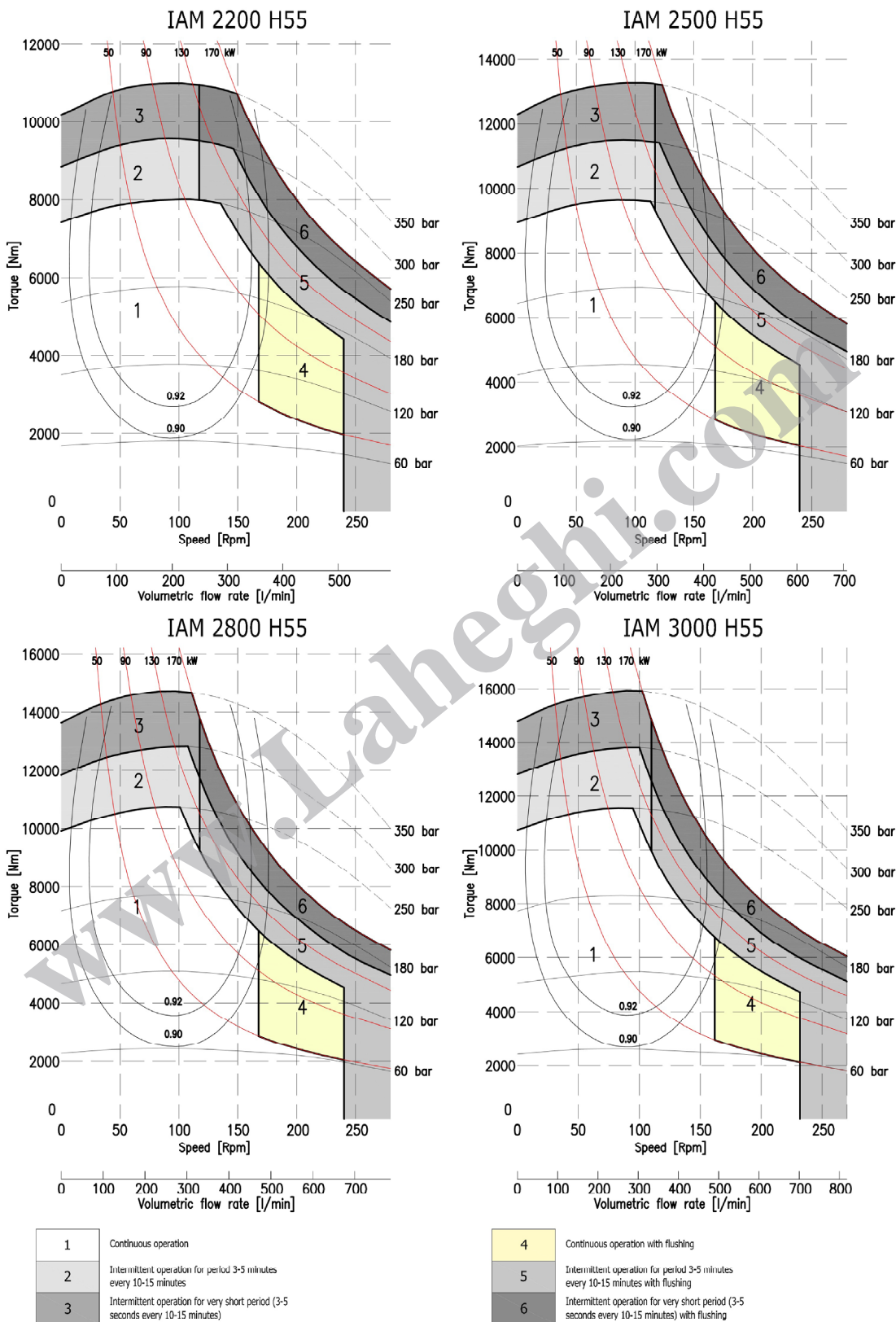


SHAFT OPTIONS

A0: Standard splined shaft



IAM H55 - POWER CHARTS



IAM H55 - ORDERING INSTRUCTIONS

IAM	---	/	H55	A	D	---	SB
Model IAM							
Displacement 2200 cc/rev 2500 cc/rev 2800 cc/rev 3000 cc/rev							
Interchangeability /C							
Housing H55							
Shaft A0 – Standard splined shaft A1 – Special splined shaft A2 – Parallel shaft							
Distributor D90 - SAE 1 1/2 " 6000 psi flange							
Tachometer TA TB EST EST.30 J							
Spline billet SB9 – 82 UNI 221 SB10 – BS.3550							

EXAMPLE :

IAM 2500 H55 A1 D90

IAM 2800/C H55 A0 D90 TA